

### 雙動導桿氣缸 Double acting guide cylinders

<b>GDB</b>	含油軸襯重負荷型 HEAVY DUTY (BUSH) TYPE	
<b>GDU</b>	線性軸承精密型 HEAVY DUTY (LINEAR BEARING) TYPE	

- 導桿缸係氣缸與週邊設備結合而成，可有絕佳之抗旋轉，扭力及側向負載的能力。
- 導桿缸一律附有磁性感應。
- 導桿缸GDB(U)  $\phi 32 \sim \phi 63$  一律附有端點可調式緩衝。
- The guiding units can be assembled to cylinders in conformity ISO 6431/6432 standard.
- Antirotation is guaranteed by two steel guide stems, which moment is supported by linear bearings in GDU series and brass bushes in GDB series.

### 規格表 Specifications

氣缸內徑 Bore sizes of cylinder (mm)	$\phi 20, \phi 25, \phi 32, \phi 40, \phi 50, \phi 63$
行程範圍 The range of stroke (mm)	行程依需求製作 Stroke by request
工作媒體 Power fluid	已濾清之壓縮空氣(潤滑或未潤滑) Filtered air with or without lubrication
使用壓力範圍 The range of pressure (kgf/cm <sup>2</sup> )	2 ~ 7
使用溫度範圍 The range of temperature (°C)	-10 ~ 60

### 訂購代號 Order No.

**GDB** - **40** × **100** - **RP** - **LN-01A** × **2**

- 型式 Type
 

<b>GDB</b>	
<b>GDU</b>	
- 內徑 Bore
 

<b>20</b>	$\phi 20$
<b>25</b>	$\phi 25$
<b>32</b>	$\phi 32$
<b>40</b>	$\phi 40$
<b>50</b>	$\phi 50$
<b>63</b>	$\phi 63$
- 行程 Stroke
 

<b>LN-01B</b>	for $\phi 20, \phi 25$
<b>LN-01A</b>	for $\phi 32, \phi 40$
<b>LN-02A</b>	for $\phi 50, \phi 63$
- 後支撐板 Rear flange coupling
 

<b>RP</b>	
-----------	--
- 感應器數量 Quantity
 

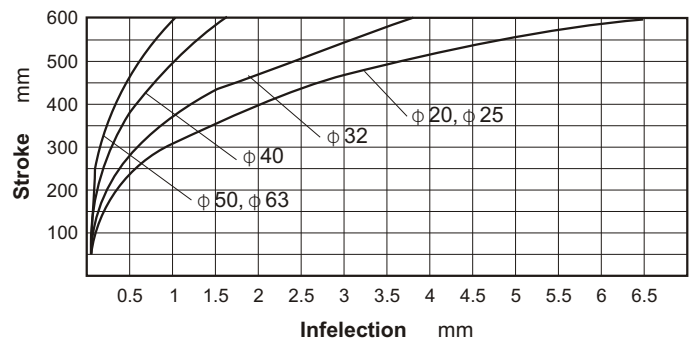
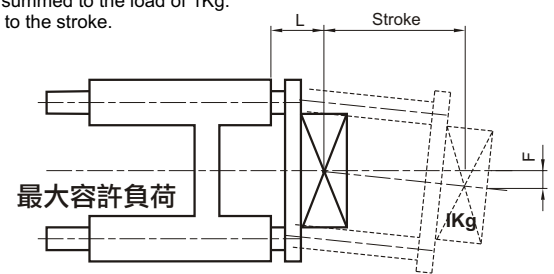
<b>LN-01B</b>	
<b>LN-01A</b>	
<b>LN-02A</b>	
- 近接開關 Sensor switch

### 荷重圖表 Maximum allowable torque moment

容許負荷偏擺  
Max. Allowable Load

#### GDB / GDU

Inflection of guide stems is due to their weight summed to the load of 1Kg. related to the stroke.

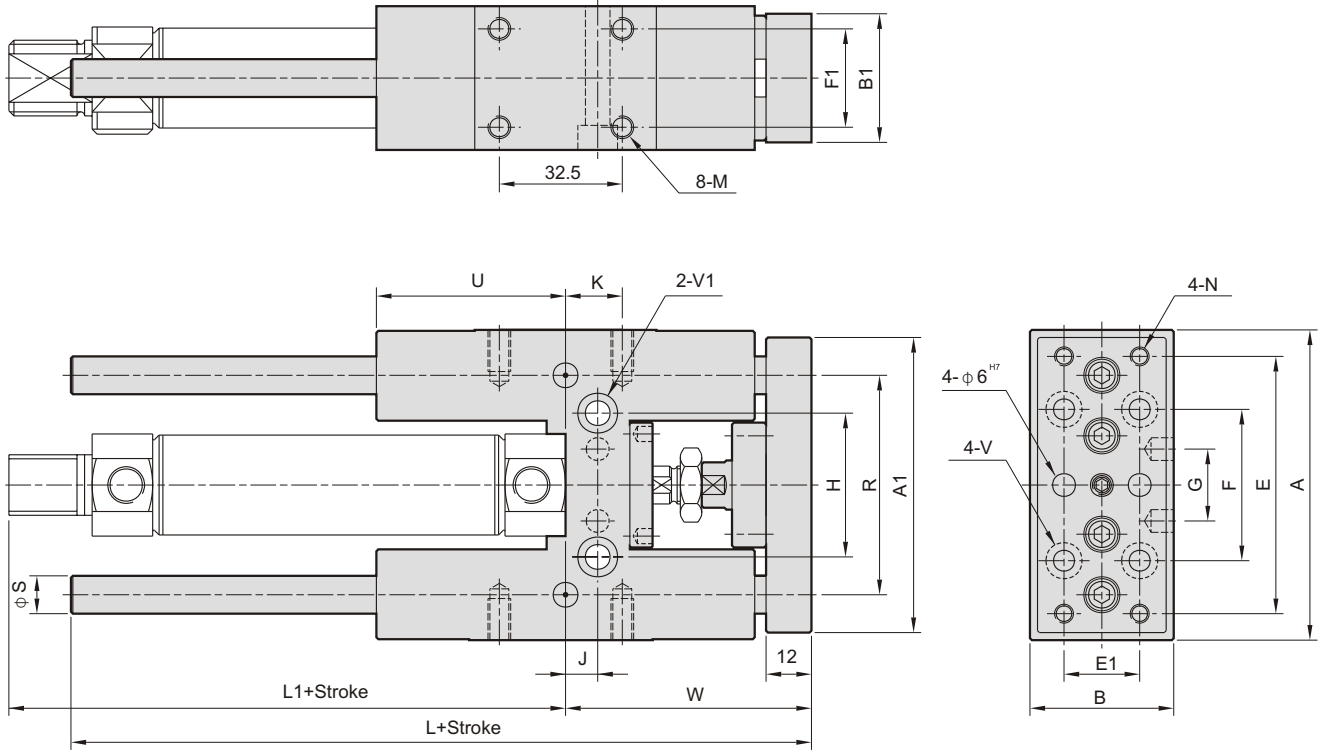


尺寸圖 Dimension  $\phi 20$ ,  $\phi 25$

**GDB** 含油軸襯重負荷型  
Heavy duty (bush) type



**GDU** 線性軸承精密型  
Heavy duty (linear bearing) type

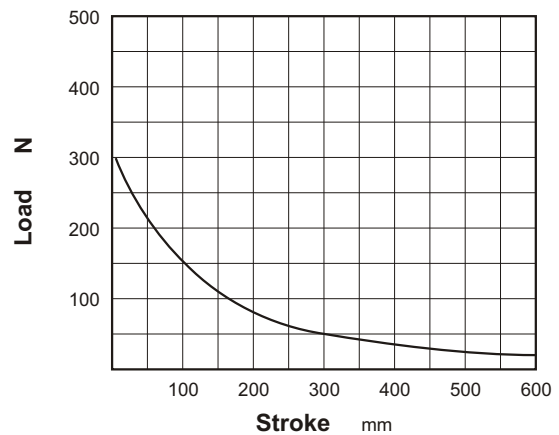
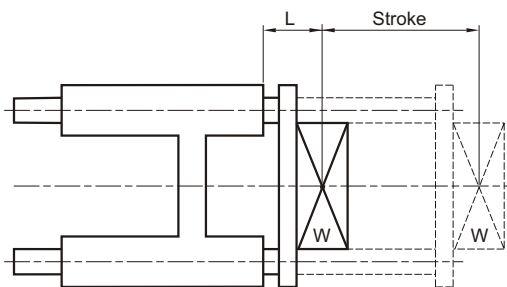


Bore	A	A1	B	B1	E	E1	F	F1	G	H	J	K	L	L1	M	N	R	S	U	V	V1	W
$\phi 20$	82	78	38	34	68	20	40	26	19	38	8.5	15	135	81	M6,深11	M5	58	10	50	$\phi 5.5$ , 皿孔 $\phi 9.5$ 深5.4	$\phi 6.5$ , 皿孔 $\phi 10.5$ 深6.5	65
$\phi 25$	82	78	38	34	68	20	40	26	19	38	8.5	15	135	86	M6,深11	M5	58	10	50	$\phi 5.5$ , 皿孔 $\phi 9.5$ 深5.4	$\phi 6.5$ , 皿孔 $\phi 10.5$ 深6.5	65

荷重圖表 Maximum allowable torque moment  $\phi 20$ ,  $\phi 25$

容許負荷偏擺  
Max. Allowable Load

**GDB / GDU**



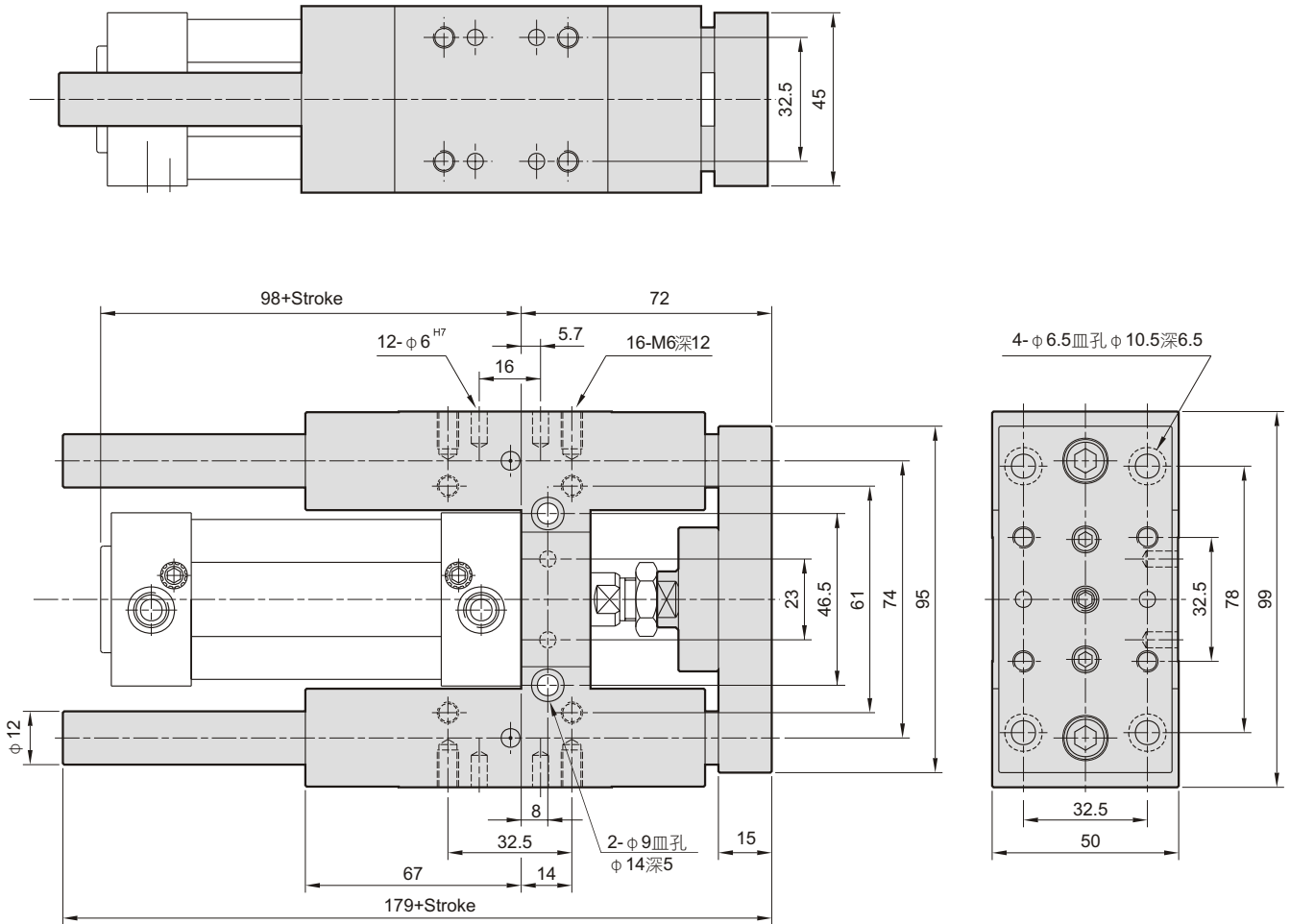
導桿氣壓

尺寸圖 Dimension  $\phi 32$

**GDB** 含油軸襯重負荷型  
Heavy duty (bush) type



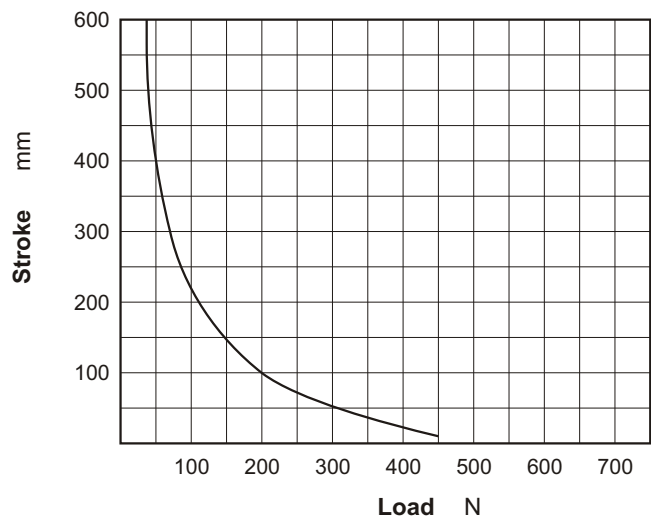
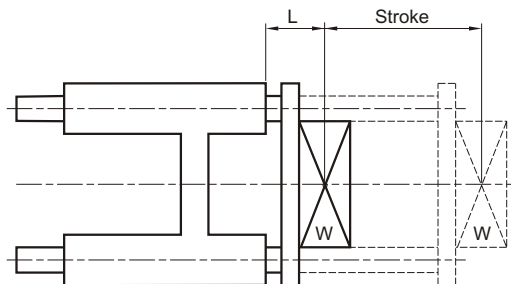
**GDU** 線性軸承精密型  
Heavy duty (linear bearing) type



荷重圖表 Maximum allowable torque moment  $\phi 32$

最大容許負荷  
Max. Allowable Load

**GDB / GDU**



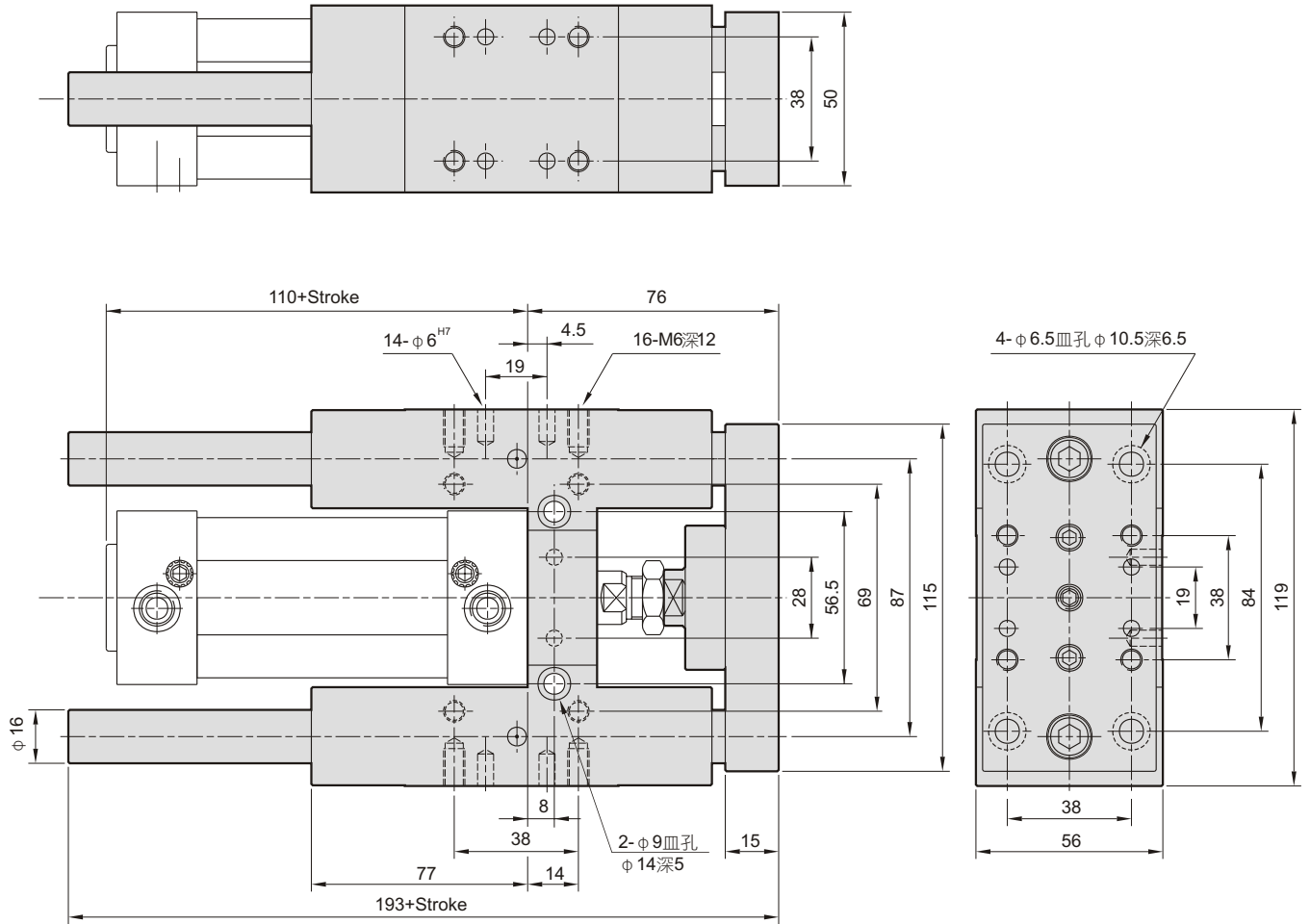
Guide cylinders

尺寸圖 Dimension  $\phi 40$

**GDB** 含油軸襯重負荷型  
Heavy duty (bush) type



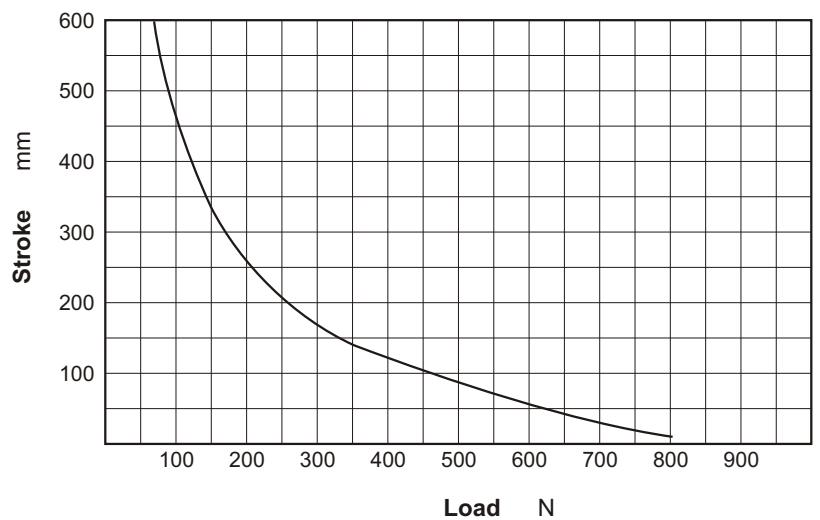
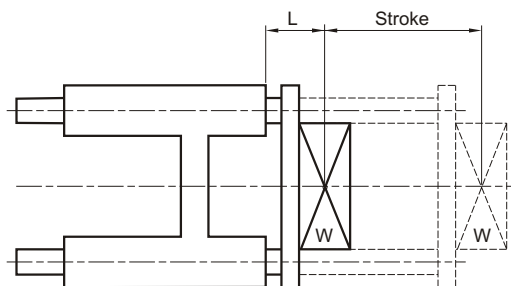
**GDU** 線性軸承精密型  
Heavy duty (linear bearing) type



荷重圖表 Maximum allowable torque moment  $\phi 40$

最大容許負荷  
Max. Allowable Load

**GDB / GDU**



導桿氣壓

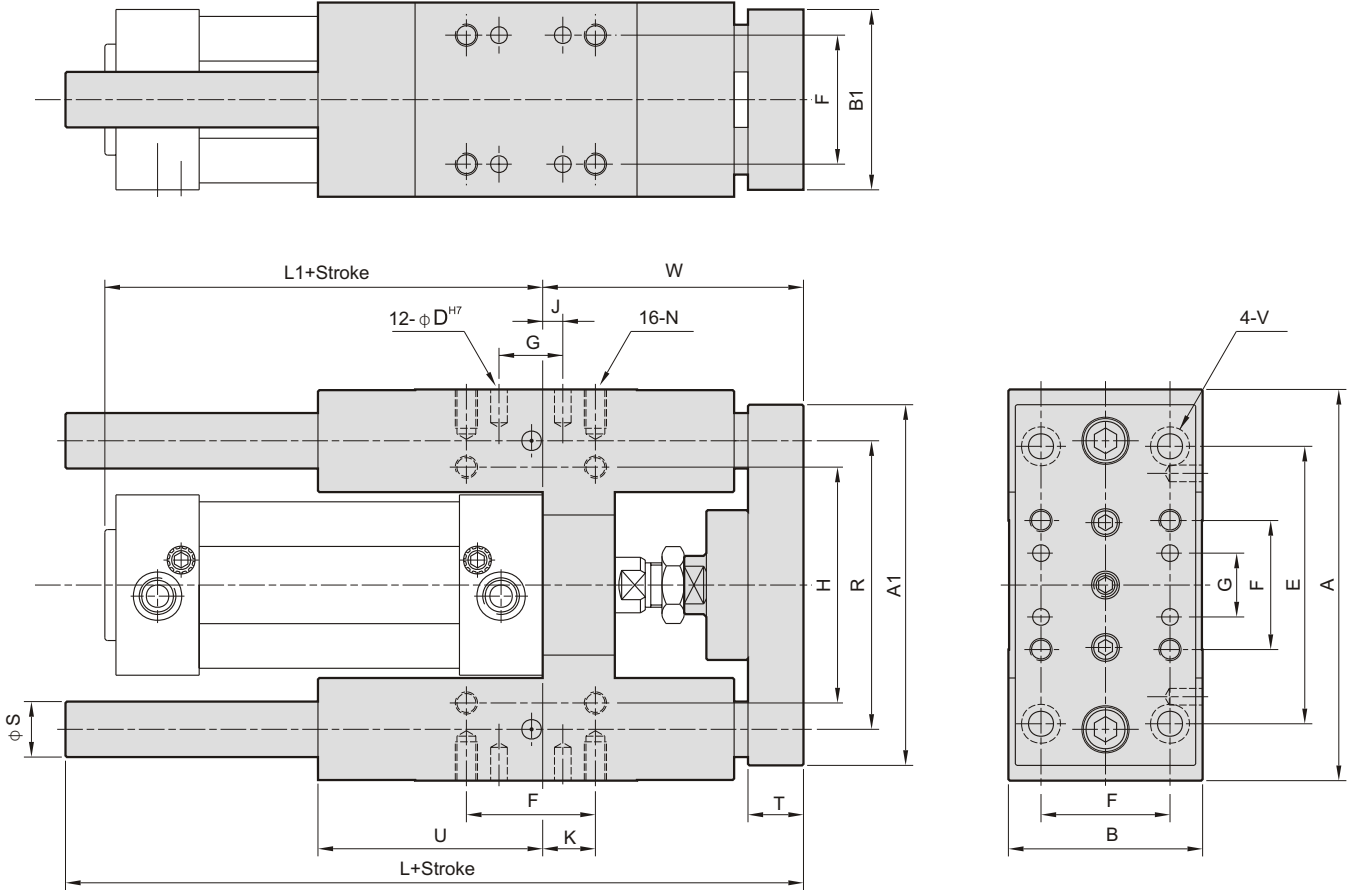
Guide cylinders

尺寸圖 Dimension  $\phi 50$ ,  $\phi 63$

**GDB** 含油軸襯重負荷型  
Heavy duty (bush) type



**GDU** 線性軸承精密型  
Heavy duty (linear bearing) type



Bore	A	A1	B	B1	D	E	F	G	H	J	K	L	L1	N	R	S	T	U	V	W
$\phi 50$	141	135	70	65	6	100	46.5	23	85	7.5	19	215	111	M8,深14	104	20	20	81	$\phi 9$ ,皿孔 $\phi 14$ 深8.5	94
$\phi 63$	156	150	80	75	6	105	56.5	28	100	5	19	230	126	M8,深16	119	20	20	96	$\phi 9$ ,皿孔 $\phi 14$ 深8.5	94

荷重圖表 Maximum allowable torque moment  $\phi 50$ ,  $\phi 63$

最大容許負荷  
Max. Allowable Load

**GDB / GDU**

